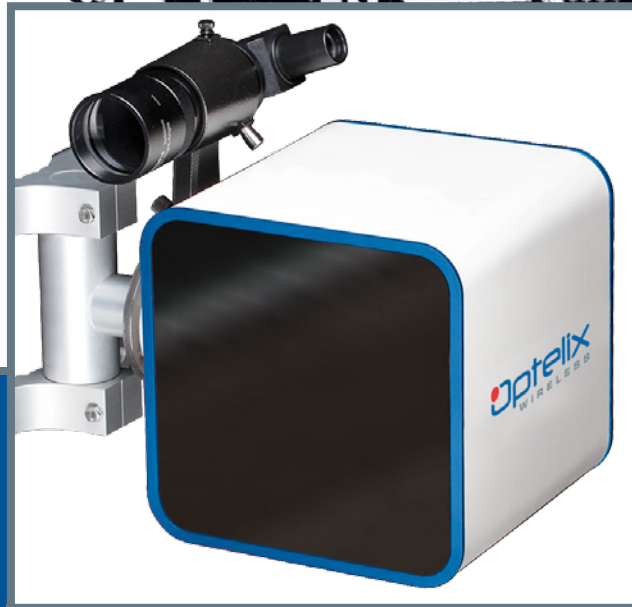




OPTICAL WIRELESS BROADBAND

NanoWave G1000

Carrier Grade technology without the licensing cost. The NanoWave G1000 is a cost effective, robust, Point-to-Point Optical Wireless Broadband link designed for mobile operators and broadband wireless connectivity applications.



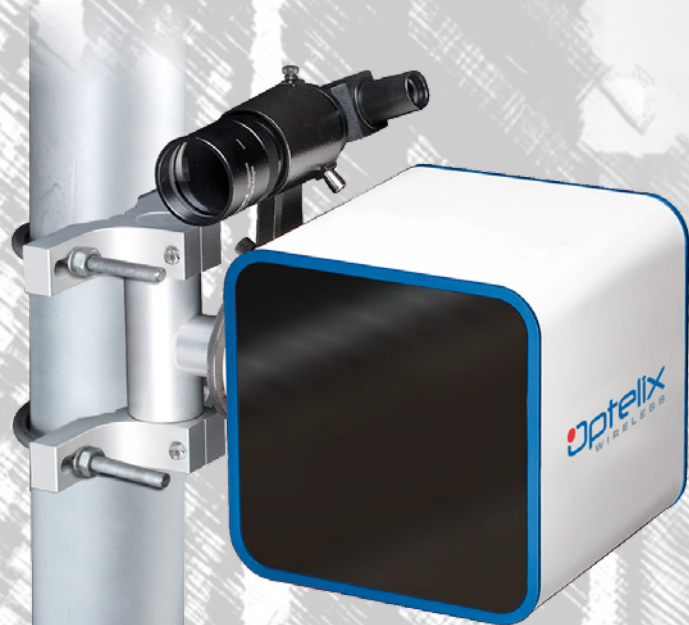
Optelix: Wireless Broadband

Features and Benefits

- License exempt operation
- Ethernet 1.25 Gbps (Full Duplex)
- Small form factor
- Remote management
- Plug and Play
- Inherently secure
- Quick to Install
- Lowest cost Wireless Connection
- True Fiber-over-the-air solution

Applications

- LTE Small Cell Backhaul
- Enterprise Broadband
- High Speed Research Networks
- Alternative To Fibre
- LAN Extensions
- Path redundancy
- Campus connectivity
- CCTV Camera Backhaul
- Disaster Recovery



System information:

- Range: Up to 1500 Meter
- Throughput: 1.25Gbps (Full Duplex)
- Transmission Wavelength: 850nm
- TX power: +16dBm (Max at Antenna Port)
- Sensitivity: - 38dBm (At Antenna Port)
- Availability: Up to 99.999%
- MTBF: 10 years
- Wind load: Operating 200km/h, Survival 250km/h

Environmental:

- Temperature range: - 30°C to + 65°C
- Cold Start - 20°C

Power Supply:

- PoE: IEEE 802.3af
- Power Consumption: 12W 48Vdc

Alignment Tools:

- Web server alignment software
- Optical Alignment Scope

Network:

- Interfaces: 10/100/1000 BASE-SX/LX
- Interfaces: 10/100 BASE-TX (Management Port)
- Latency: < 100 nanoseconds

Management:

- SNMP: V1, V2c
- HTTP: Web browser-based

Connection:

- Cable: Singlemode or multimode fiber
- Connector: LC Optical

Dimensions (ODU):

- Size: 215 x 215 x 215mm
- Weight: Outdoor Unit - 3kg, Bracket - 4kg

Regulatory:

- IP66, CE Compliant, IEC 60825-1 Class 1M, EN 55022

SFP SX

Parameter	Minimum	Typical	Maximum	Unit
Output Optical Power	- 9,5	- 6,5	- 3	dBm
Optical Extinction ratio	9	12		dB
Center Wavelength	830	850	860	nm
Spectral Width (rms)			0,85	nm
Optical Rise/Fall Times		150	260	ps
Relative Intense Noise			- 117	dB/Hz
Total Jitter			227	ps
			0,284	UI
Pout DISABLED			- 35	dBm

SFP LX

Parameter	Minimum	Typical	Maximum	Unit
Output Optical Power	- 9,5		- 3	dBm
Optical Extinction ratio	9			dB
Center Wavelength	1270		1355	nm
Spectral Width (rms)				nm
Optical Rise/Fall Times			260	ps
Relative Intense Noise			-120	dB/Hz
Total Jitter			227	ps
			0,284	UI
Pout DISABLED	- 45			dBm